

03878191



EXAMINATIONS COUNCIL OF ZAMBIA

GRADE SEVEN COMPOSITE EXAMINATION – 2023



Integrated Science

SUBJECT 4/1

60 MINUTES

TD/INT3/G7/2023

- 1 Read these instructions carefully.
- 2 **Do not** turn this page before you are told. Your teacher will tell you when to turn this page to begin the questions.
- 3 There are **50** questions in this **Integrated Science Paper**. You will be given **exactly 60 minutes** to do the questions.
- 4 For each question, four answers are given, but only one of the four is right. Work out which is the **best** answer. Then, on your **Answer Sheet**, mark the box completely by shading the answer space of the letter of your choice. If you had chosen answer **D** for a question, you would show it like this:-



- 5 You must **shade** your answer spaces **completely** and **darkly** using an HB pencil. If you have to change your answer, you must rub out the shading **very neatly** before shading the new one. **Use a clean rubber.**
- 6 When you have finished one page, go straight on without waiting to be told. If you have time left at the end of the question paper, use it to check your work carefully.
- 7 Look at your **ANSWER SHEET**. On the top left hand side are boxes which should have Examination Year, your School Number and Examination Number. It should also say **Subject 4, Paper 1**.
- 8 Look at your **ANSWER SHEET** again. At the bottom left hand side, it should have your Surname, Forename, Subject **Integrated Science**, Name of Primary School, and your Secondary School of Choice.
- 9 **Put up your hand now if:**
You have any question.
You have a wrong Answer Sheet.

You will **not** be able to ask questions once the examination has begun.

**DO NOT TURN THIS PAGE UNTIL YOU ARE TOLD.
USE ONLY AN HB PENCIL FOR YOUR ANSWERS.**

- 1 Which of the following pairs of diseases affect the skin?
 - A Measles and typhoid
 - B Ringworm and bilharzia
 - C Scabies and chicken pox
 - D Warts and flu

- 2 Which of the following wedges is used to cut firewood?
 - A Axe
 - B Knife
 - C Nail
 - D Screw

- 3 Which of the following consists of metals only?
 - A Copper, glass, plastic
 - B Iron, copper, zinc
 - C Iron, glass, clay
 - D Zinc, clay, plastic

- 4 The process by which food is broken down into nutrients that body cells use is called ...
 - A assimilation.
 - B breathing.
 - C digestion
 - D respiration.

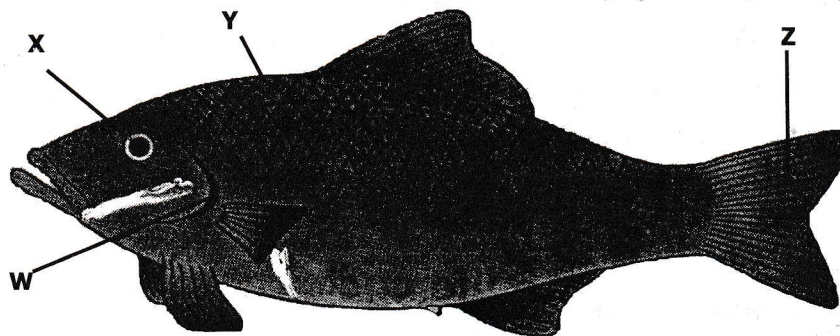
- 5 Which of the following methods of communication uses sound?
 - A Drum
 - B Email
 - C Fax
 - D Letter

- 6 Which of the following is a component of air?
 - A Aluminium
 - B Carbon
 - C Oxygen
 - D Zinc

- 7 Which of the following is a component in an electric circuit?
 - A Connecting wire
 - B Current
 - C Heater
 - D Pressing iron



- 8 The volume of a liquid is measured using a ...
- A beam balance.
 - B bathroom scale.
 - C measuring cylinder.
 - D spring balance.
- 9 The best way to conserve electricity is by ...
- A paying electricity bills on time.
 - B switching appliances off when not in use.
 - C using electricity for cooking every time.
 - D using ordinary bulbs.
- 10 When a person becomes dependent on a drug, it is said that the person is ...
- A predicted.
 - B overdosed.
 - C constipated.
 - D addicted.
- 11 The function of the heart in the body is to ...
- A absorb digested food.
 - B distribute heat.
 - C pump blood.
 - D remove waste materials.
- 12 Study the following diagram of a fish.

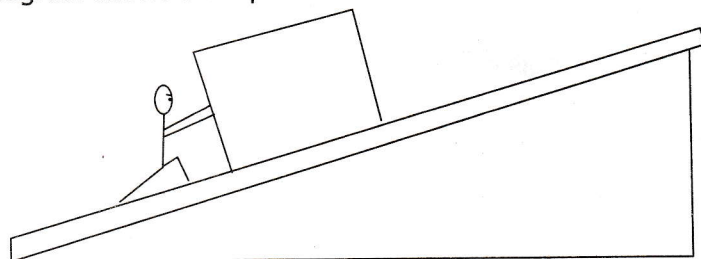


Which labelled part of the fish is used for swimming?

- A W
- B X
- C Y
- D Z

- 13** Which of the following lists consists of food rich in protein?
- A** Tomatoes, oranges, bananas
 - B** Sorghum, sugar, rice
 - C** Millet, maize, potatoes
 - D** Meat, beans, fish
- 14** Malaria can be treated by using ...
- A** aspirin.
 - B** b-complex.
 - C** coartem.
 - D** panadol.
- 15** Which of the following gases will build up in an overcrowded room when all windows and doors are closed?
- A** Carbon dioxide
 - B** Hydrogen
 - C** Nitrogen
 - D** Oxygen
- 16** Which of the following is a vertebrate?
- A** Snail
 - B** Lizard
 - C** Butterfly
 - D** Bee
- 17** Girls exposed to early sexual contact are most likely to ...
- A** live longer than their life expectancy.
 - B** have twins.
 - C** have healthy babies.
 - D** have cervical cancer.
- 18** The advantage of chemical fertilisers is that they ...
- A** release plant nutrients quickly.
 - B** increase soil acidity.
 - C** cause leaching of nutrients.
 - D** can cause water pollution.
- 19** One way of conserving water is by ...
- A** always using a garden tap only.
 - B** leaving the well open all the time.
 - C** turning off taps when not in use.
 - D** washing clothes as often as they are dirty.

- 20 Which of the following is **not** a way of providing ventilation in a building?
- A Fan
 - B Roof
 - C Vents
 - D Windows
- 21 Which of the following is the best way to prevent the spread of HIV and AIDS?
- A Abstinence
 - B Correct use of condoms
 - C Not sharing sharp tools
 - D Using screened blood for transfusion
- 22 What is likely to happen when animals are overcrowded on a farm?
- A Increased cross breeding
 - B No disease outbreak
 - C Outbreak of diseases
 - D Reduced breeding
- 23 The diagram shows a simple machine.



What is the name of the simple machine shown in the diagram?

- A Inclined plane
 - B Lever
 - C Pulley
 - D Wedge
- 24 Which of the following is the difference between insects and spiders?

	INSECTS	SPIDERS
A	Eight legs	Six legs
B	No wings	Has wings
C	Six legs	Eight legs
D	Two segmented body	Three segmented body

What type of seed dispersal is shown in the diagram?

- A Animal
- B Self
- C Water
- D Wind

30 Which of the following is a sign of dysentery?

- A Diarrhoea with a bad smell
- B Diarrhoea with blood
- C Shortness of breath
- D Loss of weight

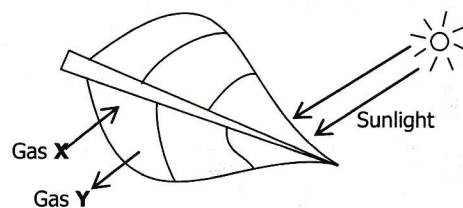
31 A salt lick in an animal's diet is important because it supplies ...

- A carbohydrates.
- B essential minerals.
- C proteins.
- D roughage.

32 Which of the following is a drug that is harmful to the body?

- A Chloroquine
- B Mandrax
- C Penicillin
- D Panadol

33 Study the following diagram representing a process taking place in a leaf.



Which of the following best identifies the **process**, **gas X** and **gas Y**?

	Process	Gas X	Gas Y
A	Evaporation	Oxygen	Nitrogen
B	Photosynthesis	Carbon dioxide	Oxygen
C	Respiration	Carbon dioxide	Oxygen
D	Transpiration	Nitrogen	Carbon dioxide

- 34 Which of the following metals is used for making bodies of aeroplanes?
- A Aluminium
 - B Calcium
 - C Copper
 - D Zinc
- 35 Which of the following pairs describes the signs of pregnancy?
- A Headache and vomiting
 - B High temperature and enlargement of breasts
 - C Morning sickness and stoppage of menstruation
 - D Stomach ache and bulging of the tummy
- 36 The importance of insects in crop production is that they play a role in ...
- A fertilisation.
 - B honey production.
 - C plant pollination.
 - D provision of protein in the diet.
- 37 The function of platelets is to ...
- A clot blood.
 - B defend the body against diseases.
 - C transport food.
 - D transport oxygen.
- 38 How are sweet potatoes propagated?
- A Budding
 - B Grafting
 - C Seeds
 - D Stem cutting
- 39 Cattle are **not** reared in some parts of Zambia due to ...
- A infestation with tse-tsefly.
 - B presence of fierce wild animals.
 - C very high temperatures.
 - D water shortages.
- 40 What is the normal body temperature of the human body?
- A 38°C
 - B 37°C
 - C 35°C
 - D 34°C

- 41 Which of the following are components of blood?
- A Artery and red blood cells
 - B Heart and white blood cells
 - C Platelets and plasma
 - D Vein and artery
- 42 Where is water absorbed in the alimentary canal?
- A Large intestines
 - B Oesophagus
 - C Small intestines
 - D Stomach
- 43 The process by which water changes from gas to liquid is called ...
- A condensation.
 - B convection.
 - C evaporation
 - D rainfall.
- 44 Cow dung is sometimes added in the compost heap in order to ...
- A ensure even decaying of the compost materials.
 - B introduce decay micro-organisms into the compost heap.
 - C prevent water logging in the compost heap.
 - D separate the layers of the compost heap.
- 45 Which of the following is the unit for mass?
- A Amperes
 - B Centimetres
 - C Kilograms
 - D Newtons
- 46 A cooking stick is an example of a ... of heat.
- A good absorber
 - B good conductor
 - C poor absorber
 - D poor conductor