



EXAMINATIONS COUNCIL OF ZAMBIA

PRIMARY SCHOOL LEAVING EXAMINATION – 2025



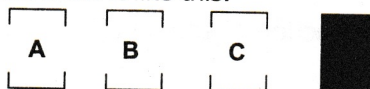
Integrated Science

SUBJECT 4/1

60 MINUTES

TD/INT3/PSLE/2025

- 1 Read these instructions carefully.
- 2 **Do not** turn this page before you are told. Your teacher will tell you when to turn this page to begin the questions.
- 3 There are **50** questions in this **Integrated Science Paper**. You will be given **exactly 60 minutes** to do the questions.
- 4 For each question, four answers are given, but only one of the four is right. Work out which is the **best** answer. Then, on your **Answer Sheet**, mark the box completely by shading the answer space of the letter of your choice. If you had chosen answer **D** for a question, you would show it like this:-

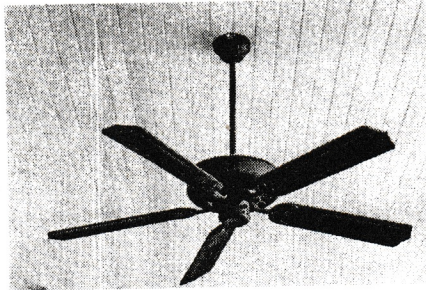


- 5 You must **shade** your answer spaces **completely** and **darkly** using an HB pencil. If you have to change your answer, you must rub out the shading **very neatly** before shading the new one. **Use a clean rubber.**
- 6 When you have finished one page, go straight on without waiting to be told. If you have time left at the end of the question paper, use it to check your work carefully.
- 7 Look at your **ANSWER SHEET**. On the top left hand side are boxes which should have Examination Year, your School Number and Examination Number. It should also say **Subject 4, Paper 1**.
- 8 Look at your **ANSWER SHEET** again. At the bottom left hand side, it should have your Surname, Forename, Subject **Integrated Science**, Name of Primary School, and your Secondary School of Choice.
- 9 **Put up your hand now if:**
You have any question.
You have a wrong Answer Sheet.
You will **not** be able to ask questions once the examination has begun.

**DO NOT TURN THIS PAGE UNTIL YOU ARE TOLD.
USE ONLY AN HB PENCIL FOR YOUR ANSWERS.**

- 1 Which mineral generates a lot of revenue for Zambia?
 - A Cobalt
 - B Copper
 - C Tin
 - D Zinc

- 2 Study the following electrical appliance.

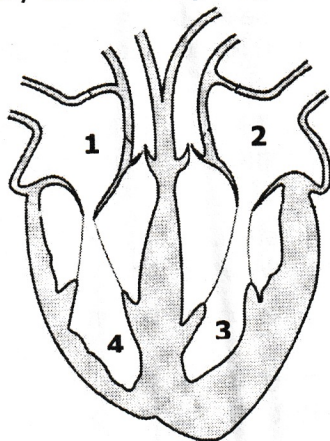


The appliance is used for ...

- A cooking.
 - B lighting.
 - C sewing.
 - D ventilation.

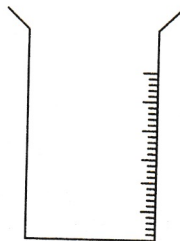
- 3 Which of the following is the function of the heart?
 - A Absorbs digested food.
 - B Defends the body from infection.
 - C Pumps blood to all parts of the body.
 - D Removes waste from the body.

- 4 Study the following diagram.



The parts **1, 2, 3,** and **4** in the diagram are...

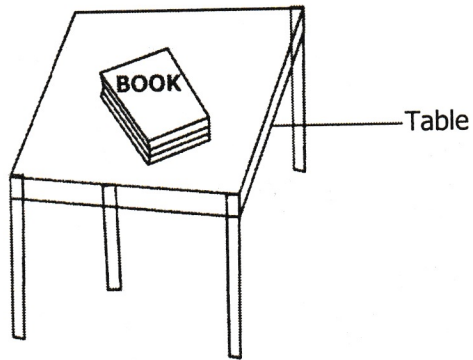
- A arteries.
 - B chambers.
 - C valves.
 - D veins.
- 5 Which of the following is **not** a metal?
- A Aluminium
 - B Carbon
 - C Copper
 - D Zinc
- 6 Study the following diagram.



The apparatus is used to measure ...

- A volume of solids.
 - B volume of liquids.
 - C mass of solids.
 - D mass of liquids.
- 7 What are the energy changes in a lit bulb in a home?
- A Electrical → Light → Heat
 - B Heat → Electrical → Light
 - C Heat → Light → electrical
 - D Light → Electrical → Heat
- 8 Water is important to the soil in crop growing because it ...
- A fertilises the soil.
 - B helps roots to absorb nutrients.
 - C removes nutrients from crops.
 - D stops soil erosion.

9 What type of energy is shown in the diagram?

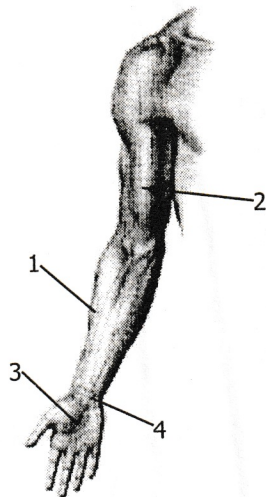


- A Chemical
- B Electrical
- C Kinetic
- D Potential

10 A person who is addicted to drugs is likely to have ...

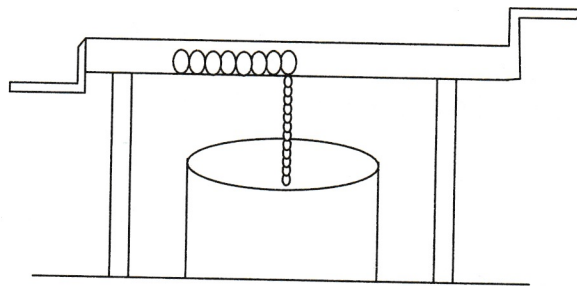
- A brain damage.
- B dysentery.
- C good digestion.
- D good memory.

11 Which of the positions is recommended for taking a pulse?



- A 1
- B 2
- C 3
- D 4

- 12 The best way to prevent the spread of HIV and STIs is by ...
- A abstaining from sex.
 - B avoiding blood transfusion.
 - C getting married.
 - D using a condom every time.
- 13 To reduce the problem of teenage pregnancy, there is need to ...
- A build separate schools for girls.
 - B expel all pregnant girls from school.
 - C provide care for pregnant girls.
 - D sensitise girls about the dangers of early pregnancy.
- 14 In order to protect hands from getting burnt, the handles of pots are made of ...
- A black materials.
 - B metals.
 - C plastics.
 - D solid materials.
- 15 The diagram shows one of the sources of water.



What is the source of water shown in the diagram?

- A Bore hole
 - B Dam
 - C Tap
 - D Well
- 16 Which of the following does **not** provide good ventilation in a building?
- A Air conditioners
 - B Air vents
 - C Heaters
 - D Windows

17 Study the following list carefully.

- (i) Closing the tap immediately after brushing teeth.
- (ii) Fixing all the leaking pipes.
- (iii) Using water from rinsing clothes.

These activities help to conserve ...

- A electricity.
 - B energy.
 - C water.
 - D wild animals.
- 18 A metal has the following properties:
- (i) It is a good conductor of heat and electricity
 - (ii) It is resistant to rust
 - (iii) It is malleable
 - (iv) It is ductile

Which metal has the mentioned properties?

- A Aluminium
 - B Copper
 - C Iron
 - D Mercury
- 19 Which of the following is a good conductor of heat?
- A Nail
 - B Plastic
 - C Rubber
 - D Wood
- 20 Which one of the following substances is **not** harmful to the human body?
- A Alcohol
 - B Cocaine
 - C Mandrax
 - D Panadol

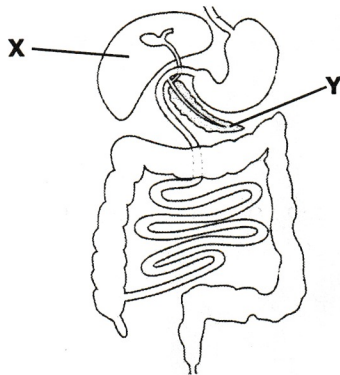
21 Study the following diagram.



Which of the labelled parts is a ventilator?

- A W
 - B X
 - C Y
 - D Z
- 22 Heavy drinking of alcohol is bad for the body because it causes ...
- A addiction.
 - B accidents.
 - C poverty.
 - D lung infection.
- 23 What reaches the stigma for fertilisation to take place?
- A Anthers
 - B Filament
 - C Ovules
 - D Pollen grains
- 24 Simple machines are used to make work ...
- A easier.
 - B interesting.
 - C more efficient.
 - D more professional.

25 The diagram shows part of the digestive system of a human being.



What are the parts labelled X and Y?

	X	Y
A	Liver	Stomach
B	Liver	Pancreas
C	Pancreas	Stomach
D	Stomach	Liver

26 One of the disadvantages of keeping livestock together is that it ...

- A is difficult to feed them.
- B is easier for a farmer to supervise workers.
- C makes transportation easier.
- D saves money due to shared labour and equipment.

27 The diagram shows a vertebrate.



To which vertebrate group does it belong?

- A Amphibian
- B Bird
- C Fish
- D Mammal

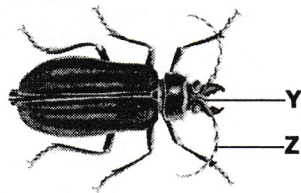
28 To which class of animals does a frog and a chicken belong?

	Frog	Chicken
A	Reptile	Mammal
B	Reptile	Bird
C	Amphibian	Mammal
D	Amphibian	Bird

29 It is important to help a suffocated person to regain consciousness faster by ...

- A calling the suffocated person's name.
- B carrying out mouth to mouth resuscitation.
- C pouring warm water over the body.
- D tickling the nose with a feather.

30 Study the following diagram of a pest.



The functions of parts Y and Z are ...

	Y	Z
A	Chewing	Smelling
B	Chewing	Flying
C	Flying	Reproduction
D	Smelling	Chewing

31 An animal which lives in another animal and depends on that animal for survival is called a ...

- A herbivore.
- B host.
- C parasite.
- D predator.

32 Formation and development of new plants ensures continuity and existence of plants. This is referred to as plant ...

- A dispersion.
- B explosion.
- C propagation.
- D vegetation.

33 In the past, before the introduction of phones, people in one district communicated with others who lived in other districts far away by ...

- A** letters.
- B** drums.
- C** conversation.
- D** e-mail.

34 Study the table below.

	Type of Food	Nutrient provided
1	Beans	Carbohydrate
2	Margarine	Protein
3	Pumpkin leaves	Vitamins
4	Cassava	Fat

Which of the types of food is correctly matched with the nutrient it provides?

- A** 1
- B** 2
- C** 3
- D** 4

35 The following are the stages of copper extraction.

- 1 Electrolysis
- 2 Floatation
- 3 Crushing
- 4 Smelting
- 5 Drilling

What is the correct order of the stages?

- A** 1 2 3 4 5
- B** 2 1 4 5 3
- C** 4 5 2 1 3
- D** 5 3 2 4 1

36 Which of the following is a common air borne disease?

- A** Dysentery
- B** Malaria
- C** Tuberculosis
- D** Typhoid

37 A learner carrying out a project was recording measurements of the amount of matter in different objects in ...

- A centimetres.
- B cubic metres.
- C kilograms.
- D Newtons.

38 Which of the following is the only mammal that flies?

- A Bat
- B Eagle
- C Ostrich
- D Owl

39 What is the percentage of nitrogen and oxygen in the atmospheric air?

	Nitrogen	Oxygen
A	0.03%	16%
B	16%	0.03%
C	21%	78%
D	78%	21%

40 Which of the following planting materials should a farmer use to propagate bananas?

- A Runners
- B Seeds
- C Stem cuttings
- D Suckers

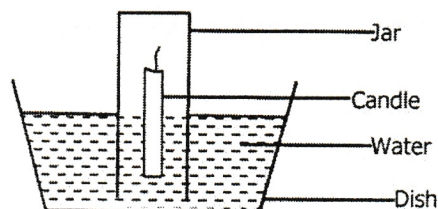
41 An electric current helps to ...

- A connect a circuit.
- B make appliances.
- C power up appliances.
- D produce electricity.

42 One of the negative effects of mining on the environment is that it ...

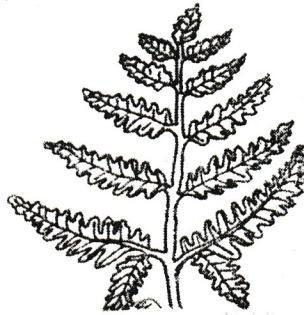
- A causes drought.
- B causes floods.
- C destroys habitats.
- D reduces soil erosion.

- 43** In order to determine the temperature of boiling water, a learner noted the reading on the thermometer ...
- A** while it was inside the boiling water.
 - B** just before the water boiled.
 - C** immediately after taking it off the boiling water.
 - D** after the water cooled.
- 44** Where is bile stored in the digestive system?
- A** Liver
 - B** Pancreas
 - C** Small intestines
 - D** Stomach
- 45** Which of the following is an advantage of chemical fertilisers in agriculture?
- A** Expensive
 - B** Leaching
 - C** Quick absorption
 - D** Spoils soil
- 46** Study the following diagram.



- Why did the candle in the jar go off after some time?
- A** All the oxygen in the Jar was used up.
 - B** Oxygen escaped from the Jar.
 - C** The Jar was filled up with water vapour.
 - D** There was water in the Jar.
- 47** A learner laid his ear onto a table and heard the clicking sound of a clock placed on the other end of the table. The learner could hear the sound from the clock through vibration in ...
- A** solid.
 - B** liquid.
 - C** liquid and air.
 - D** air and solid.

- 48 The diagram shows a non-flowering plant.



The name of the plant shown is ...

- A algae.
 - B fern.
 - C fungus.
 - D mosses.
- 49 What happens when force is applied to an object to move it from one place to another?
- A Object gains weight
 - B Object loses weight
 - C Work is done
 - D Work is not done
- 50 Why are vehicles with big and broad tires suitable for use in sandy roads? The tyres ...
- A reduce pressure.
 - B increase pressure.
 - C increase speed.
 - D reduce speed.

STOP! PLEASE CHECK ALL YOUR WORK CAREFULLY.