



04124025



EXAMINATIONS COUNCIL OF ZAMBIA

GRADE SEVEN COMPOSITE EXAMINATION – 2022

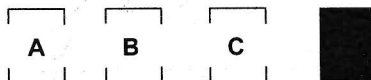
## Special Paper 1

SUBJECT 6/1

60 MINUTES

TD/SP1/G7/2022

- 1 Read these instructions **carefully**.
- 2 **DO NOT** turn this page before you are told. Your teacher will tell you when to turn this page to begin answering the questions.
- 3 There are **50** questions in this **Special Paper One** paper. You will be given **exactly 60 minutes** to do the questions.
- 4 For each question, four answers are given, but only one of the four is correct. Work out which is the **best** answer. Then, on your **Answer Sheet**, mark the box completely by shading the answer space of the letter of your choice. If you had chosen answer **D** for a question, you would show it like this:-



- 5 You must **SHADE** your answer spaces **completely** and **darkly** using an HB pencil. If you have to change your answer, you must rub out the shading **very neatly** before shading the new one. **Use a clean rubber.**
  - 6 When you have finished one page, go straight on without waiting to be told. If you have time left at the end of the question paper, use it to check your work carefully.
  - 7 Look at your **Answer Sheet**. On the top left hand side are boxes which should have, Examination Year, your School Number and Examination Number. It should also say **Subject 6 Paper 1**.
  - 8 Look at your **Answer Sheet** again. At the bottom left hand side, it should have your Surname, Forename, Subject – Special Paper One, Name of Primary School and your Secondary School of choice.
  - 9 **Put up your hand now if:**  
You have any question.  
You have the wrong Answer Sheet.
- You will not be able to ask questions once the examination has begun.

**DO NOT TURN THIS PAGE UNTIL YOU ARE TOLD.  
USE ONLY AN HB / PENCIL FOR YOUR ANSWERS.**

1 Which word completes the pattern?

- SMILE – MILE
- SPEND – PEND
- EVERY – VERY
- WEARS –
- A EARS
- B EATS
- C SEAT
- D WARS

2 Which word completes the pattern?

- LATER – LATE
- TAKES – TAKE
- WEARS – WEAR
- HANDS –
- A SAND
- B LAND
- C HATS
- D HAND

3 Which number must be put in the box to complete the pattern?

- 998, 997, 996, 995,
- A 699
  - B 969
  - C 994
  - D 996

4 Which number must be put in the box to complete the pattern?

3	12	21
6	15	24
9	18	<input type="checkbox"/>

- A 27
- B 30
- C 33
- D 45

5 Which letters completes the pattern?

- AOZ, BOY, COX, DOW,
- A EOY
  - B FOX
  - C GOX
  - D XOF
- E

- 6 Which number must be put in the box to complete the pattern?

$2^1$   $2^2$   $2^3$   $2^4$   
 2 4 8

- A 16  
 B 8  
 C 6  
 D 2

- 7 Which word completes the pattern?

T  T - TAIN~~T~~

P  T - PAINT

S  T -

F  T - FAINT

- A SAINT  
 B START  
 C SWEAT  
 D SWEET

- 8 Complete the following pattern:

SUBTRAC - SUBTRACTION

PREPARE - PREPARATION

ADD - ADDITION

ADORE -

- A ADDICTION  
 B ADMIRATION  
 C ADOPTION  
 D ADORATION

- 9 A shoe ALWAYS has a ...

- A FACE.  
 B LOOP.  
 C SIZE.  
 D ZIP.

- 10 Which letters must be put in the box to complete the pattern?

BD, CI, DP,

- A EY  
 B FY  
 C YE  
 D YF

Used by me Fuck + Kasonde

11 If ASSEMBLY stands for 6 8 8 2 7 5 3 9, then 8 6 7 2 stands for ...

- A BEAM.
- B SALES.
- C SAME.
- D SOME.

SAME

12 Three of the following are ALIKE in some way, which one is DIFFERENT?

- A FIRST
- B FIVE
- C SECOND
- D THIRD

13 Pollution ALWAYS has a ...

- A WAY.
- B NOTICE.
- C FOUNDER.
- D CAUSE.

14 What comes NEXT in the series?

D  $\frac{E}{5}$ , I  $\frac{J}{10}$ , N  $\frac{O}{15}$ , S  $\frac{T}{20}$ ,

- A  $Y \frac{25}{x}$
- B  $X \frac{25}{y}$
- C  $Y \frac{x}{25}$
- D  $X \frac{y}{25}$

F B S  
A B C d e f g h i j k l m n o p q r s  
T u v w x y z

15 Which letters must be put in the box to complete the pattern?

ZA, XC, VE, , RI

- A GT
- B KP
- C PK
- D TG

16 If COMPETENT means 2 3 4 5 6 7 6 8 7 then MEET means ...

- A 2 3 4 6
- B 2 3 5 6
- C 4 6 6 7
- D 7 6 6 7

357

Competent  
2 3 4 5 6 7 6 8 7  
- A 6 6 7

17 Which letter in the word STOP would come LAST if arranged in ALPHABETICAL order?

- A O
- B P
- C S
- D T

18 An Atlas ALWAYS has .

- A SKETCHES.
- B OCEANS.
- C MAPS.
- D COUNTRIES.

19 Which number completes the pattern?

9 18 2

8 16 2

7 14 2

6 12 2

5 10 2

- A 18,9,2
- B 10,5,2
- C 9,18,2
- D 4,8,2

20 Complete the pattern below:

BCA, EFD, HIG,

- A JKL
- B KLJ
- C MON
- D NOM

21 Which word is opposite to INTERRUPT?

- A BEGIN
- B CONTINUE
- C DISCONNECT
- D START

22 ENVELOPE is to LETTER as WALLET is to ...

- A BAGS.
- B CLOTHES.
- C MONEY.
- D POCKET.

23 Which letter in the word TERTIARY would come THIRD if arranged in ALPHABETICAL order?

- A R
- B I
- C E
- D A

A B C D E F G H I J K L M N O P Q R S T U V W X Y Z  
 Mr Mustika Mpang

- 24** Three of the following are ALIKE in some way. Which one is DIFFERENT?
- A COPPER
  - B DIAMOND
  - C MERCURY
  - D SILVER
- 25** A single parent ALWAYS has at least a ...
- A WIFE.
  - B SPOUSE.
  - C HUSBAND.
  - D CHILD.
- 26** Three of the following are ALIKE in some way. Which one is DIFFERENT?
- A AWAKE
  - B DOZE
  - C DREAM
  - D SLEEP
- 27** Which one of the following word would come THIRD if they are put in ALPHABETICAL order? A
- A AFFLICT
  - B AFFORD
  - C AFFIRM
  - D AFFAIR
- 28** Three of the following are ALIKE in some way. Which one is DIFFERENT?
- A WORRY
  - B STRESS
  - C STRAIN
  - D RELAX
- 29** A grade 7 class consists of 20 learners. 5 of them live in Newtown, 6 in Kamirenda and the rest in Roan. How many learners live in Roan?
- A 7
  - B 9
  - C 13
  - D 27
- 30** ANCIENT is to MODERN as ARTIFICIAL is to ...
- A FAKE
  - B FALSE
  - C NATURAL
  - D SIMILAR

31 Which of the following words are **not** OPPOSITE to each other?

- A BAD – GOOD
- B BLACK – WHITE
- C BITTER – SWEET
- D BRAVE – STRONG

32 LIBRARY is to BOOKS as CINEMA is to ...

- A CAMERA.
- B MOVIES.
- C PEOPLE.
- D STUDIO.

33 A letter ALWAYS has ...

- A an ADDRESS.
- B an ENVELOPE.
- C a MESSAGE.
- D a STAMP.

34 Three of the following are ALIKE in some way. Which one is DIFFERENT?

- A SUPPORT
- B RESTRAIN
- C ENCOURAGE
- D ADVISE

35 MASCULINE is to FEMININE as SINGULAR is to ...

- A ALONE
- B CERTAIN
- C PLURAL
- D UNIQUE

36 FLIGHT is to PLANE as VOYAGE is to ...

- A CAR.
- B SHIP.
- C TRAIN.
- D TRUCK.

37 Which word is OPPOSITE to SINGLE?

- A BACHELOR
- B COUPLE
- C PARTNER
- D SPINISTER

*I love you  
I will you  
Mary me baby my name  
Futh  
Sim Angolwa  
1/2*

- 38 Which letter in the word STREET would come THIRD if arranged in ALPHABETICAL order?
- A T
  - B S
  - C R
  - D E
- 39 Bupe is Chola's sister. Bruno is Chola's father and Mirriam's husband. Who is Mirriam to Bupe?
- A Sister
  - B Mother
  - C Cousin
  - D Brother
- 40 If OP means O + P multiplied by 3 is 93, then QR would be ...
- A 35
  - B 70
  - C 105
  - D 111
- 41 GRASS is to GRAZE as BREAST MILK is to ...
- A SUCK.
  - B SIP.
  - C EAT.
  - D DRINK.
- 42 The sun sets late by 10 minutes each day. If on Thursday the sun went down at 17:50 hours, at what time was sunset last Monday?
- A 17:20 hours
  - B 17:15 hours
  - C 17:10 hours
  - D 17:00 hours
- 43 MAIZE is to COB as BEANS is to ...
- A LEAF.
  - B POD.
  - C ROOT.
  - D TUBER.
- 44 If today is Saturday May the 2<sup>nd</sup>, what day will it be on 11<sup>th</sup> of May?
- A Monday
  - B Sunday
  - C Tuesday
  - D Wednesday

45 If today is Saturday 7<sup>th</sup> July, what day will it be on the 31<sup>st</sup> of July of the same month?

- A Monday
- B Sunday
- C Wednesday
- D Tuesday

46 At a family Christmas party there was a man and his wife, his two sons and their wives, and three children in each of his son's families. What is the total number of family members who attended the party?

- A 15
- B 13
- C 10
- D 12

47 If the following words are arranged in ALPHABETICAL order, which one would come SECOND?

- A CLEAR
- B CLEAN
- C CLENCH
- D CLEVER

48 Maria went riding her bike. She was joined by her friend who also had a bike. As they rode, they saw three bicycles in front of them. One of the three was going the opposite direction. The rest were going in the same direction as Maria's. How many bicycles were going in the same direction?

- A 2
- B 3
- C 4
- D 5

49 If there are 52 weeks in one year, then how many weeks are in a decade?

- A 5 200 weeks
- B 520 weeks
- C 312 weeks
- D 104 weeks

50 Which word will come THIRD if they are put in ALPHABETICAL order?

- A JOINT
- B JOKER
- C JUDGE
- D JUMBLE

**STOP! PLEASE GO BACK AND CHECK YOUR WORK.**



Kenyon de la

Joint  
Joker  
Judge  
Jumble